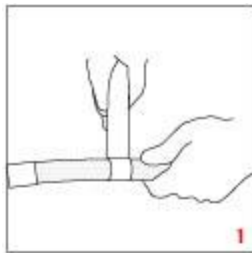




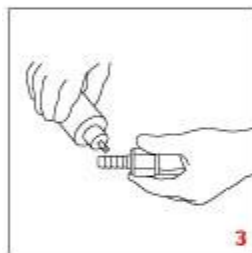
## Auto-Mate™ Hose Ends with Perform-O-Flex™ or Auto-Flex™ Assembly Instruction



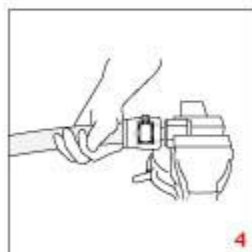
1. Cut the hose square with a Radiac wheel or a fine tooth hacksaw. It is necessary to wrap the hose tightly with masking or electrical tape and to cut through the tape. This helps to prevent the stainless braid from fraying.



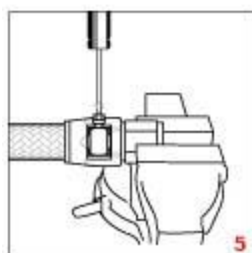
2. Trim any frayed ends of the braid with sharp snips or diagonal cutters and remove the tape.



3. Slip the Econ-O-Fit collar over the end of the hose.



4. Lubricate the inside of the hose and the outside of the Auto-Mate nipple.



5. Push the Auto-Mate into the hose until it bottoms against the socket.

6. Tighten the Econ-O-Fit hose clamp.

7. Blow the assembly clean and pressure test before running the car.



**Pressure Test All Hose Assemblies Before Installation!**