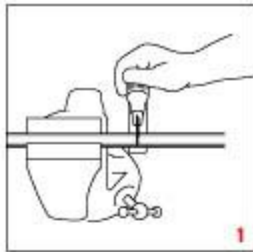
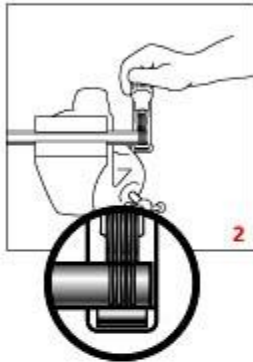




# Tube-Mate Auto-Fit™ Hose Ends with Perform-O-Flex™ or Auto-Flex™ Assembly Instruction

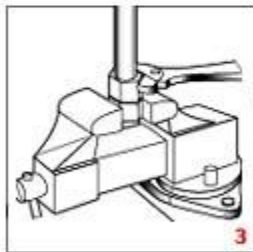


1. Assemble the tube-mate end onto the hose onto the hose per Auto-Fit hose and instructions.



2. Cut and de-burr the tubing. The cut must be square.

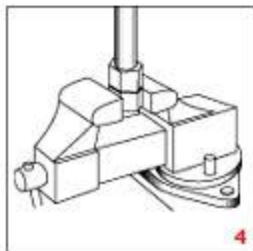
3. Using the Tube-Mate grooving tool, groove the tubing. The tubing may also be beaded (or barbed). See Earl's new tube beading tool.



4. Push the tubing into the correct size Tube-Mate until it bottoms.

5. Tighten the Tube-Mate nut.

6. Blow the assembly clean and pressure test before running the car.



**NOTE:** Tube-Mate hose ends are designed to be used only with beaded, barbed or grooved rigid tubing at no more than 25 psi working pressure.



**Pressure Test All Hose Assemblies Before Installation!**