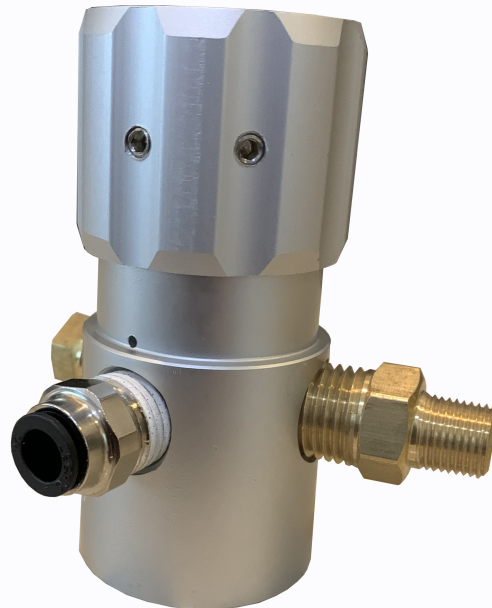


MPS ADJUSTABLE PRESSURE REGULATOR



The MPS Pressure Regulator has 4 ports. A 1/4" NPT inlet (High Pressure) port, a 1/4" NPT outlet (Regulated Pressure 0-600psi), a 1/8" NPT gauge (Regulated Pressure 0-600psi) port, and a 1/8" NPT gauge (High Pressure) port. The ports are all labeled, HP for high pressure and LP for low or regulated pressure.

The inlet port is supplied with a 1/4 NPT hex nipple installed that reduces it to 1/8 NPT male that can be installed into the bottle valve actuator of your CO2 bottle or gauge adapter of your nitrous bottle. This can be replaced with a -4 x 1/4 NPT AN fitting and use a -4 line to connect to your high pressure source. The outlet has a 1/4 NPT x 1/4 poly fitting. This will go out to your low pressure device. We recommend using a small tank in conjunction with this regulator to insure an adequate volume of gas for your device. The outlet would be plumbed directly to the tank with a line going from the tank to the device. The 2 supplied 1/8 NPT plugs are to plug the unused high and low pressure ports. **Note: No fittings are tight. Fittings are finger tight in regulator.**

Before turning on your supply bottle close the regulator by turning the adjustment knob clockwise until it stops. Do not overtighten! Turn on the supply bottle. To adjust the outlet pressure turn the adjustment knob counterclockwise slowly until the desired pressure is reached. When not using the system we recommend turning off the supply bottle and purging the system of gas.

If you have any questions we have a Frequently Asked Questions page at our web site as well as the telephone tech support. Thank you for your purchase of this MPS product. All products sold by MPS are for use at closed course competition events and not for use on public streets or highways.